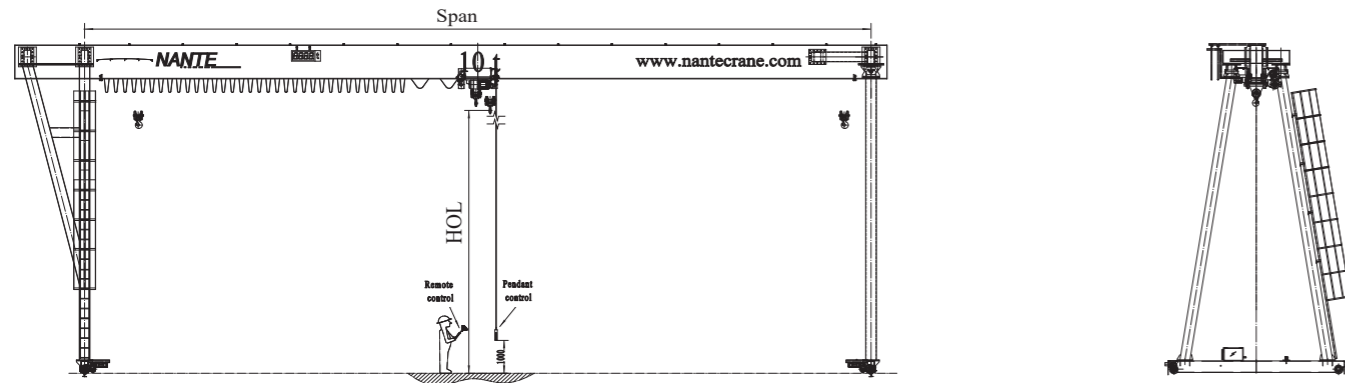


Single Girder Box Type Gantry Crane



Single Girder Truss Type Gantry Crane

Main Features:

1. Follows the international design code, like FEM, CMAA, EN ISO.
2. The main girder can be box type and truss type which is compact, low self-weight.
3. Hollow shaft end carriage design with vertical gear motor, space saving and long service life.
4. The control panel, gear motor include the shelter for long service life.
5. Equipped with high quality cable reel and PUR cables for crane mobile power supply.
6. Equipped with Sound & Revolving light for alarm and storm locker for strong wind outdoor area.



Single Girder Gantry Crane Inquiry Questionnaire

Basic Information:		
NO	Description	Answer
1	Box type or Truss type	
2	Lifting Capacity (t)	
3	Span (m)	
4	Cantilever Length(m)	
5	Lifting Height (Under Hook)	
6	Work Duty Grade (FEM/ISO)	
7	Long Travel Length (m)	
8	Control Model	Cabin, Pendant or Remote control
9	Is installed accessories required? Like crane rail, bus bar etc.	
10	Power Supply( V, HZ, P )	
Lifting and Travelling Requirement:		
11	Lifting Speed(m/min)	
12	Cross Travel Speed (m/min)	
13	Long Travel Speed (m/min)	
Site Conditions:		
14	Outdoor Or Indoor	
15	Wind Speed(m/min)	
16	Which product will be lifted?	

Capacity		3.2T					5T					10T					16T				
Span	m	10	15	20	25	30	10	15	20	25	30	10	15	20	25	30	10	15	20	25	30
Cantilever	m	3 ~ 7					3 ~ 7					3 ~ 7					3 ~ 7				
Height of Lifting	m	6 ~ 15					6 ~ 15					6 ~ 15					6 ~ 15				
Lifting Speed		5/0.8					5/0.8					5/0.8					4/0.66				
Trolley Speed	m/min	5~20					5~20					5~20					5~20				
Long Travel Speed		0-20, 0-32, 0-40					0-20, 0-32, 0-40					0-20, 0-32, 0-40					0-20, 0-32, 0-40				